



# The Mayfair Picnic

£40 per person

---

Coronation chicken with mango chutney [E, G, Mu, SD]

Egg mayonnaise and mustard cress [E, G, Mu]

Pork and apple sausage rolls, tomato relish [G, M, Mu, SD]

Smoked mackerel Scotch eggs with tartare sauce [E, F, G, M, Mu]

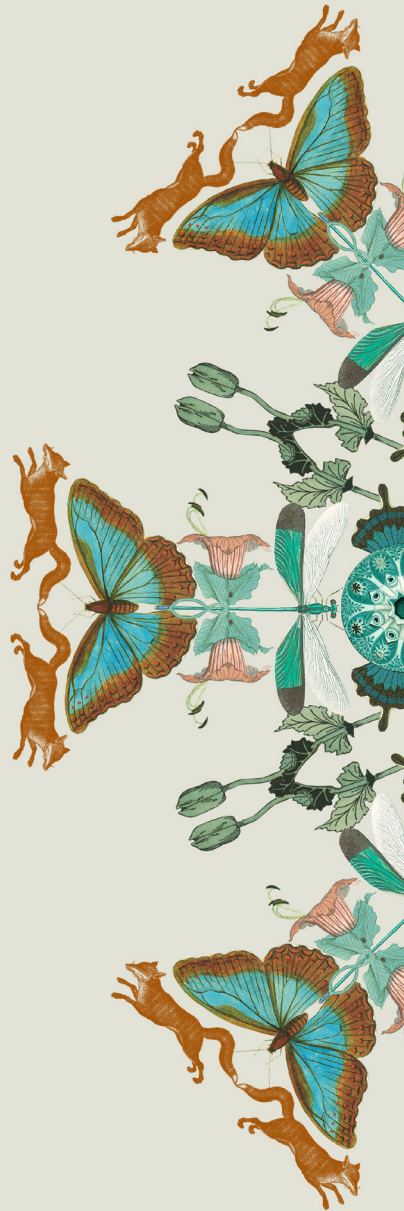
Jersey Royal potato salad [E, Mu]

The Mayfair coleslaw [E, Mu]

Battenburg cake [E, G, M, N]

Strawberries and cream [M]

Rhubarb and custard blondies [E, G, M, S]



ALLERGY KEY – [C] CRUSTACEANS, [Ce] CELERY, [E] EGGS, [F] FISH, [G] GLUTEN, [L] LUPIN, [M] MILK, [Mo] MOLLUSCS, [Mu] MUSTARD, [N] NUTS, [P] PEANUTS, [Se] SESAME SEEDS, [S] SOYA, [SD] SULPHUR DIOXIDE



The Mayfair  
Townhouse

THE MAYFAIR TOWNHOUSE

27-41 Half Moon Street, London, W1J 7BG

TEL: 0208 138 3400

[mth-fandb@themayfairtownhouse.com](mailto:mth-fandb@themayfairtownhouse.com) | [www.themayfairtownhouse.com](http://www.themayfairtownhouse.com)