



# The Green Park Picnic (Plant-Based)

---

Half-bottle of Champagne Laurent-Perrier

Pickled cucumber and cream cheese sandwich [G, SD]

Grilled vegetables and rocket with romesco sauce [G, N]

Falafel Scotch egg with coconut raita [E, G]

Tatziki, babbaganoush, hummus, toasted pitta [G]

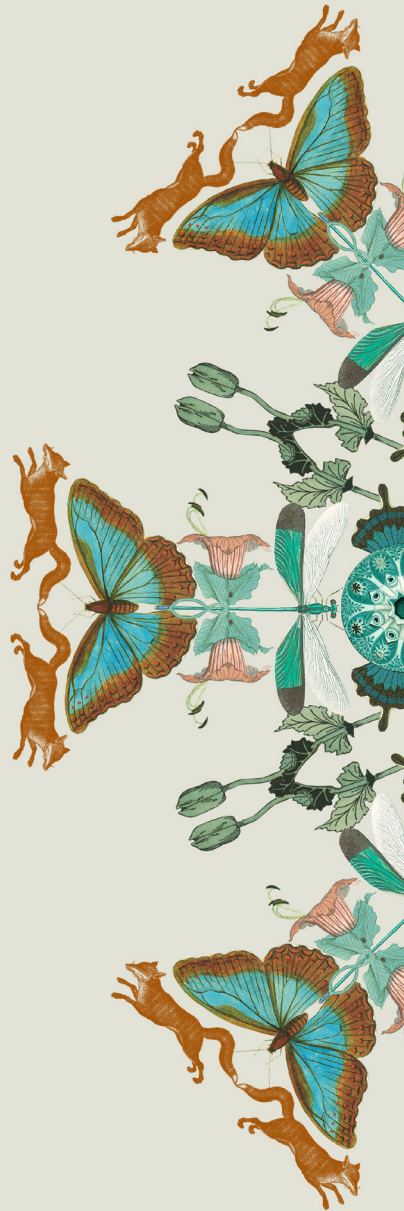
Panzanella salad, heirloom tomatoes, basil, croutons and balsamic dressing [G, SD]

The Mayfair coleslaw [E, Mu]

Strawberries and cream [M]

Vegan carrot cake [Gluten-free]

Chocolate and coconut chip cookies [S]



ALLERGY KEY – [C] CRUSTACEANS, [Ce] CELERY, [E] EGGS, [F] FISH, [G] GLUTEN, [L] LUPIN, [M] MILK, [Mo] MOLLUSCS, [Mu] MUSTARD, [N] NUTS, [P] PEANUTS, [Se] SESAME SEEDS, [S] SOYA, [SD] SULPHUR DIOXIDE



The Mayfair  
Townhouse

THE MAYFAIR TOWNHOUSE

27-41 Half Moon Street, London, W1J 7BG

TEL: 0208 138 3400

[mth-fandb@themayfairtownhouse.com](mailto:mth-fandb@themayfairtownhouse.com) | [www.themayfairtownhouse.com](http://www.themayfairtownhouse.com)